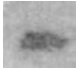


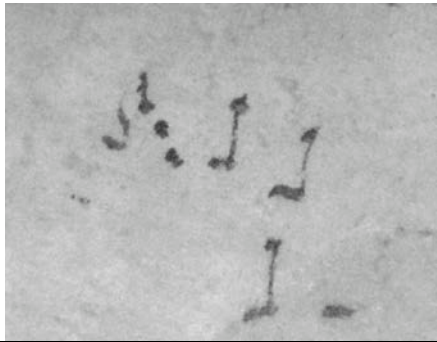


Paris, BnF, Latin 8312 (environs de Tours, add. neum. X<sup>e</sup> et XI<sup>e</sup> s.)

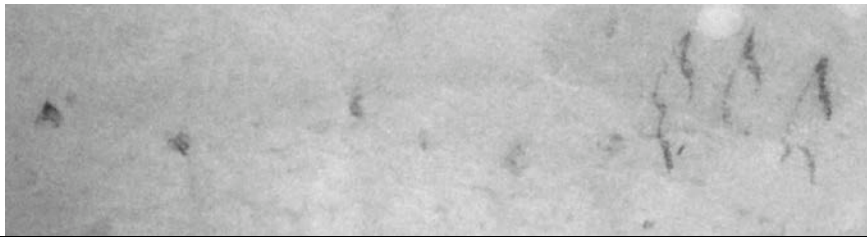
**α**

PUN	VIR	PES	CLV	TOR	PO R	SCA		QLS	ORS	TRI	CPH	EPH
												



lat. 8312, f. 1v

**β**



lat. 8312, f. 1v