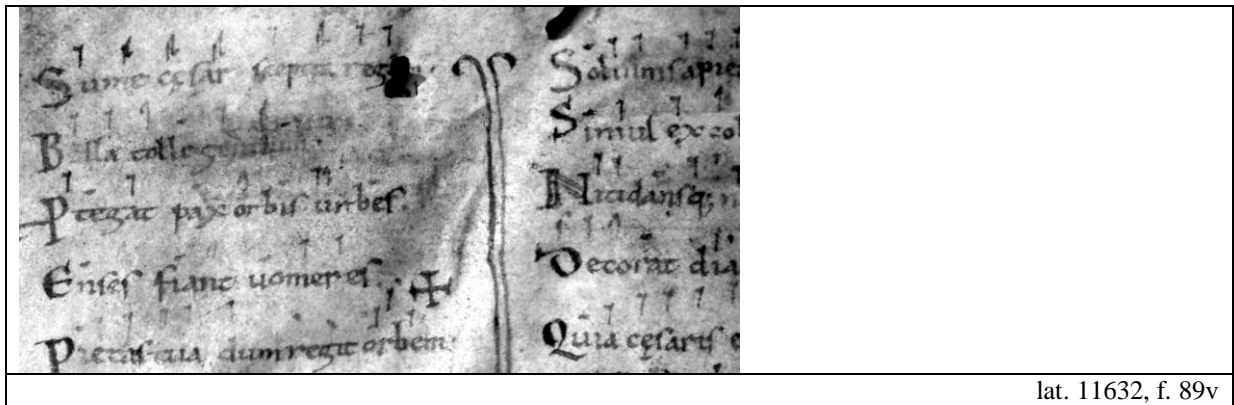


Paris, BnF, Latin 11632 (Saint-Maur, add. neum. xi^e s.).

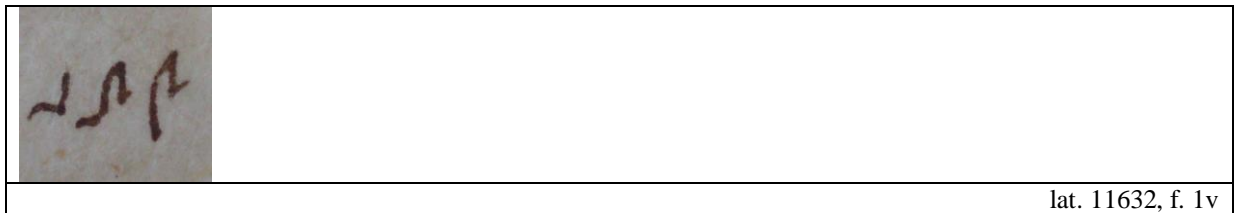
α

PUN	VIR	PES	CLV	TOR	POR	SCA	CLM	ORS	QLS	EPP	CPH



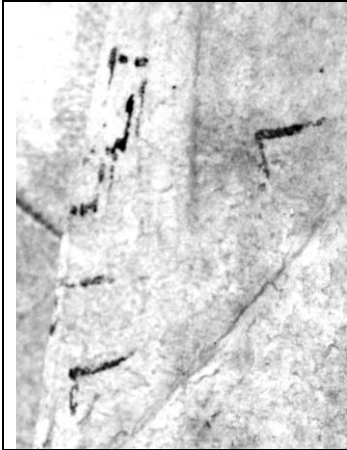
β

PUN	VIR	PES	CLV	TOR	POR	SCA	CLM	ORS	QLS	EPP	CPH



δ

PUN	VIR	PES	CLV	TOR	POR	SCA	CLM	QLS	PES STRATUS	EPP	CPH



lat. 11632, f. 90v